



# Pet Preparedness

Pets are an important member of your family! This is why they should be included in your family's emergency plan.

**Keep the following actions in mind when it comes to your pets:**



**Make a plan**



**Build an emergency kit**



**Stay informed**

## MAKE A PLAN



### Know what to do with your pet during an evacuation



Many shelters or modes of public transportation do not allow pets. Make a plan for where you and your pet(s) might go in the event you need to evacuate. Check with your local emergency management agency for local accommodations for pets in the event of a disaster.

#### Develop a buddy system

Plan with neighbors, friends or relatives to make sure that someone is available to care for or evacuate your pets if you are unable to do so.



### Have your pet microchipped

Make sure to keep your address and phone number up-to-date and include contact information for an emergency contact outside of your immediate area.

### Get a Rescue Alert Sticker

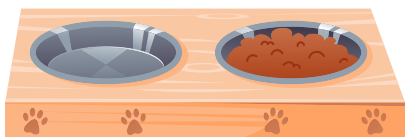
This easy-to-use sticker will let people know that pets are inside your home. Make sure it is visible to rescue workers (we recommend placing it on or near your front door), and that it includes the types and number of pets in your home as well as the name and number of your veterinarian. If you must evacuate with your pets, and if time allows, write "EVACUATED" across the stickers.



## BUILD A KIT

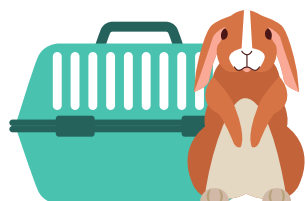


Just as you do with your family's emergency supply kit, think first about the basics for survival. Review your kit regularly to ensure that the contents are fresh.



**Food and water.** Keep several days of supplies on hand and ready to transport. Include bowls or other necessary containers handy.

**Medicine and First Aid Kit.** Keep an extra supply of the medicine your pet takes on a regular basis in a waterproof container and any necessary medical supplies.



**Pet carriers or leash.** You will need to have each pet in a portable bag, crate, cage or carrier. Small animals will need to be in a travel sized carrier. Make sure the carrier has food, water, bedding and other needs.

**Grooming items and sanitary needs.** Include pet litter, bedding, trash bags and other items needed to keep your pet healthy and clean.



**Familiar items.** Put favorite toys or treats in your kit to reduce stress.



Take a picture of you and your pet together.

If you become separated from your pet, a picture will help you document ownership and allow others to assist you in identifying your pet.

## STAY INFORMED

Stay informed of current conditions and know how you will receive emergency alerts and warnings. Sign up for Alert Iowa at [alert.iowa.gov](http://alert.iowa.gov).

## STAY SAFE

Always bring your pets indoors at the first sign or warning of a storm.

