

Thunderstorm & Lightning Preparedness

Thunderstorms are dangerous storms that can include lightning, hail and powerful winds.

By definition, a **SEVERE THUNDERSTORM** must contain:



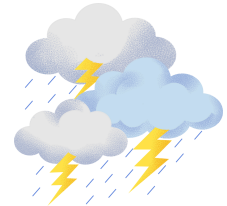
Large hail one inch in diameter or larger.



Winds 58 mph or stronger.



Tornadoes may occur with a thunderstorm.



Every thunderstorm has lightning.

LIGHTNING SAFETY

When Thunder Roars, Go Indoors!



Lightning is a leading cause of injury and death from weather-related hazards.



Lightning tends to strike the tallest objects. Avoid lone trees, towers or utility poles.

DERECHO (STRAIGHT LINE WINDS)



A DERECHO is a significant, potentially destructive weather event that is characterized

as having widespread, long-lived, straight-line winds associated with a fast-moving group of severe thunderstorms. The wind damage path must extend **more than 240 miles**, with wind gusts exceeding 58 mph.

Before

Severe weather warnings are issued by county. If you are not near your home, know the county where you're located, in case the weather turns.

Check the weather forecast before going outdoors for extended periods. Watch for signs of approaching storms.

Cut down or trim trees that may be in danger of falling on your home. Consider buying surge protectors or a lightning protection system to protect your home.

Tune in to NOAA Weather Radio or AM/FM radio. Sign up for local alerts and warnings.

Postpone outdoor activities if thunderstorms are imminent. This is your best way to avoid being caught in a dangerous situation.

During

When the thunder roars, go indoors! A sturdy building is the safest place to be during a thunderstorm.

If indoors, avoid running water or using landline phones. Electricity can travel through plumbing and phone lines.

If boating or swimming, get to land and find a sturdy shelter or hard-topped vehicle immediately.

Avoid flooded roadways. Turn Around Don't Drown®. Just six inches of fast-moving water can knock you down, and one foot of moving water can sweep your vehicle away.

Pay attention to alerts and warnings.

After

Keep listening to local authorities for updates.

Watch for fallen power lines and trees. Report them immediately.